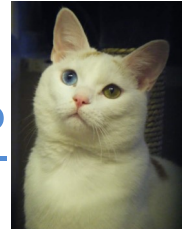




Manchester & Salford Branch
Registered charity 232255



Thinking of adopting a cat from us?

Have a read of our adoption requirements below!

Essential Criteria

- ✓ **We do not rehome any animals as children's pets.** An adult over 18 years old must be fully responsible for the animal's care. In addition, we do not rehome kittens to live with children under the age of 5.
- ✓ **All animals in the adopter's home must be neutered & fully vaccinated** (where applicable). *Please contact us if you are unsure on 0161 882 0680.*
- ✓ **The location of your property must not be on, or near to, a busy road.** *If in doubt please contact us with your postcode.*

About Our Cats

- ✓ **Our cat adoption fee is £60 per cat or £110 for a pair.** This cost includes neutering, 1st and 2nd vaccination against Feline Infectious Enteritis and Influenza, microchipping, flea and worming treatment as well as a blood test to see if the cat tests positive for FIV or FeLV.
- ✓ **If you wish to view a cat please contact us via telephone 0161 882 0680 or email rspcamcr_salford@btconnect.com.** Kittens are kept in foster homes & adult cats are generally kept at a private boarding facility.
- ✓ **Please only approach us when you are completely ready to adopt.** We cannot 'hold' animals for long periods.
- ✓ **You can place a reserve on an animal once you have met them.** All people in the home ideally should meet the cat before making the decision. Animals can only be reserved for 1 week after the meeting has taken place.
- ✓ **Once you have found your chosen animal please contact us to arrange the home visit.**

Home visit

- ✓ We aim to do home visits within one week of a reservation being placed. *If you are privately renting please make sure you have written permission from your landlord to keep a pet in the property.*

At the home visit we are looking to see that:

- You have a good understanding about the financial implications and commitment involved in adopting your chosen animal. *Cats will need to remain indoors for 4-6 weeks, kittens until they are at least 6 months old.*
- That a cat will be able to express their natural behaviour in your home; this includes being able to roam outdoors as and when they please. (A cat flap is not essential but provision for inclement weather is strongly advised.)
- We only rehome cats as 'house cats' if there is a specific health or welfare reason to do so.
- Our visitors will endeavor to answer any questions you may have so please make a list!

After the Home Visit

- ✓ **The outcome of the home visit will be shared with you within 24 hours.** If the home visit is successful we expect you to collect your cat within 7 days.
- ✓ **Make sure you have all your supplies ready before collecting your cat.**
- ✓ **Please bring along with you a pet carrier and your adoption fee.** It sounds obvious but so many people do forget!

Our promise to you

- ✓ We are here for you for the life of your animal—if you have any questions please get in touch.
- ✓ Your home visitor will contact you 4-6 weeks after the adoption to find out how you are all getting on.
- ✓ If for any reason in the future you cannot keep your cat they *must* be returned to the branch (this forms part of your adoption contract with us). Please bear in mind that we will usually need a few days warning to arrange space.